

Spec Suite Ready to
Occupy +
4% Commission to
Tenant's Agent



GROVE CREEK II

2 1 6 8 W G R O V E P A R K W A Y • P L E A S A N T G R O V E

www.cbre.com/grovecreek

GROVE CREEK II

Space Highlights

- ▲ \$22.75 per RSF, full service
- ▲ Renovation recently completed
- ▲ 3,944 SF Spec suite is now available for immediate occupancy
- ▲ Built out using a clean, modern design

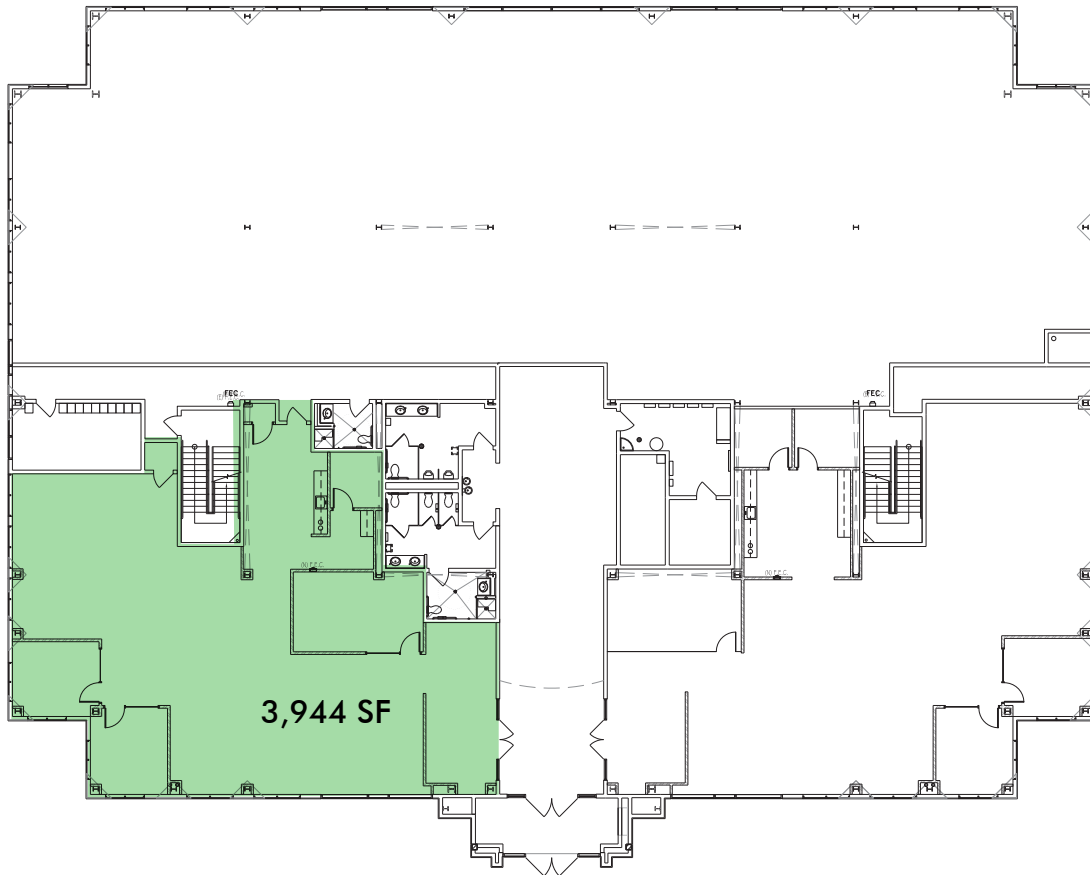
Building Features

- ▲ 5 parking stalls per 1,000 USF (free)
- ▲ Great freeway and major highway access
- ▲ Fiber provided by Century Link and Integra
- ▲ Accessible to Utah County and Salt Lake County employment pools
- ▲ Four EV car charging stations available
- ▲ Shower and changing rooms available
- ▲ Locker rooms and showers available



FLOOR PLAN

1st Floor - As Built



Spec Suite Pictures



GROVE CREEK II



For more information please contact:

Eric Smith

Senior Vice President
+1 801 869 8008
eric.smith@cbre.com

James Mecham

First Vice President
+1 801 869 8028
james.mecham@cbre.com

Laurie Adair

Senior Associate
+1 801 869 8009
laurie.adair@cbre.com

© 2016 CBRE, Inc. This information has been obtained from sources believed reliable. We have not verified it and make no guarantee, warranty or representation about it. Any projections, opinions, assumptions or estimates used are for example only and do not represent the current or future performance of the property. You and your advisors should conduct a careful, independent investigation of the property to determine to your satisfaction the suitability of the property for your needs. CBRE and the CBRE logo are service marks of CBRE, Inc. and/or its affiliated or related companies in the United States and other countries. All other marks displayed on this document are the property of their respective owners.